



PGMS Family Overview for Blended Learning 2020-2021 (DRAFT) ***(Updated November 2020 - Pending Board Approval)***

Introduction - This is an overview of the DRAFT Blended Learning plan for Pacific Grove Middle School. Every aspect of this plan follows current state and county guidelines regarding safety measures and physical distancing to keep all staff and students safe as we return to face-to-face instruction. The plan is flexible enough to allow us to shift into and out of a full distance learning program if we are ordered by county officials to do so. As the county guidelines change, our plan for reopening may be adjusted. We realize that this will not answer all of our community's questions, so if you have questions or comments, please contact Principal Sean Roach by email at sroach@pgusd.org.

Two Programs Offered - Families would choose one

1. Full Distance Learning - Students who are medically compromised, have family members that are high risk, or who do not feel comfortable attending in-person classes at PGMS do not attend school but participate in distance learning every day.
2. Blended Learning program - Students attend school half-time with the other half accessed via distance learning.

Full Distance Learning

- Students do all learning from home.
- Daily live interaction with a teacher and peers.
- All testing is done online.
- Instruction will be computer based, but also include traditional materials (paper, workbooks, manipulatives, etc.), distributed as necessary.
- Will have a combination of live instruction (synchronous) and recorded instruction (asynchronous).
- Attendance and online engagement will be monitored.

Blended Learning Program

Weekly Attendance for Live Instruction - We currently have two draft schedules for this model, the "AM/PM" and the "A/B." In both models, Mondays continue to be asynchronous work days, with the virtual Advisory classes. Office hours will be offered before and/or after school.

Blended Learning Program (Cont.)

AM/PM - In the AM/PM model, students come to school four half-days each week, either in the morning cohort (“A”) or in the afternoon cohort (“B”). The morning cohort (“A”) attends school in the mornings, and works asynchronously in the afternoons, and the afternoon cohort works asynchronously in the mornings, and attends school in the afternoons. All students attend three classes each day, and each class is 50 minutes long. In this model, there is no lunch period.

| | Monday | Tuesday | Wednesday | Thursday | Friday |
|--------------------|---------------------------------|-----------------------------------|-----------------------------------|-----------------------------------|-----------------------------------|
| AM/PM Model | Teacher Planning, Advisory & DL | AM Group (PM Asynchronous) | AM Group (PM Asynchronous) | AM Group (PM Asynchronous) | AM Group (PM Asynchronous) |
| | | PM Group (AM Asynchronous) | PM Group (AM Asynchronous) | PM Group (AM Asynchronous) | PM Group (AM Asynchronous) |

AM/PM Split

| | Monday | Tuesday | Wednesday | Thursday | Friday | |
|--------------|-----------|--------------------|---|--------------------|---|--------------------------------------|
| | Period 1* | Period 1 (Group 1) | Period 1 (Group 2) | Period 1 (Group 1) | Period 1 (Group 2) | |
| 7:45- 8:25 | Period 1* | 7:35 - 8:15 | Period 1 (Group 2) | Period 1 (Group 1) | Period 1 (Group 2) | |
| 8:30- 9:10 | Period 2 | 8:30 - 9:20 | Period 2A | Period 2A | Period 2A | Synchronous Instruction Group A |
| 9:20- 10:00 | Period 3 | 9:20-09:35 | Break (15) | | Break (15) | Synchronous Instruction Group B |
| 10:10- 10:40 | Advisory | 9:35- 10:25 | Period 4A | Period 5A | Period 4A | Breaks |
| 10:40- 11:00 | Break | 10:25 - 10:40 | Break (15) | | Break (15) | Advisory (All Students A/B together) |
| 11:00- 11:40 | Period 4 | 10:40 - 11:30 | Period 6A | Period 7A | Period 6A | Asynchronous schedule (optional) |
| 11:50- 12:30 | Period 5 | 11:30-12:30 | Cohort A Dismissal Grab & Go Lunch Disinfect Classrooms Cohort B Arrival | | Cohort A Dismissal Grab & Go Lunch Disinfect Classrooms Cohort B Arrival | |
| 12:30- 1:15 | Lunch | 12:30-1:20 | Period 2B | Period 3B | Period 2B | |
| 1:15- 1:55 | Period 6 | 1:20-1:35 | Break (15) | | Break (15) | |
| 2:05- 2:45 | Period 7 | 1:35-2:25 | Period 4B | Period 5B | Period 4B | |
| 2:45- 3:00 | Break | 2:25-2:40 | Break (15) | | Break (15) | |
| 3:00- 3:40 | Period 8* | 2:40-3:30 | Period 6B | Period 7B | Period 6B | |

A/B - In the A/B model, students come to school two days each week, either Tues/Weds (cohort “A”) or Thurs/Fri (cohort “B”). Each cohort works asynchronously on days they do not come to campus. Students attend three classes each day they are at school, and each class is 80 minutes long. In this model, a lunch period (45 minutes) is built in.

| | Monday | Tuesday | Wednesday | Thursday | Friday |
|------------------|---------------------------------|-----------------------------------|-----------------------------------|-----------------------------------|-----------------------------------|
| A/B Model | Teacher Planning, Advisory & DL | Cohort A (Cohort B Asynch) | Cohort A (Cohort B Asynch) | Cohort B (Cohort A Asynch) | Cohort B (Cohort A Asynch) |

A/B Split

| | Monday | Tuesday* | Wednesday* | Thursday** | Friday** | |
|--------------|----------------------|---------------|--|-------------|--|-------------------------------------|
| | Period 1* | Breakfast | Breakfast | Breakfast | Breakfast | Cohort A Live, face to face |
| 7:45- 8:25 | Period 1* | 8:00 - 9:15 | 8:00 - 9:15 | 8:00 - 9:15 | 8:00 - 9:15 | |
| 8:30- 9:10 | Period 2 | 8:35 - 9:15 | 8:35 - 9:15 | 8:35 - 9:15 | 8:35 - 9:15 | Cohort B Live, face to face |
| 9:20- 10:00 | Period 3 | 9:15-9:35 | Break (20) | | Break (20) | |
| 10:10- 10:45 | Advisory 10:10-10:40 | 9:35 - 10:55 | Period 2 | Period 3 | Period 2 | Advisory (Whole group A/B, Virtual) |
| 10:45- 11:00 | Break | 10:55-11:20 | Break (20) | | Break (20) | |
| 11:00- 11:40 | Period 4 | 11:20 - 12:40 | Period 4 | Period 5 | Period 4 | Asynchronous Work Time |
| 11:50- 12:30 | Period 5 | 12:40-1:25 | Lunch (45) | | Lunch (45) | |
| 12:30- 1:15 | Lunch | 1:20- 2:40 | Period 6 | Period 7 | Period 6 | |
| 1:15- 1:55 | Period 6 | 2:40 - 3:00 | Dismissal | | Dismissal | |
| 2:05- 2:45 | Period 7 | 2:50 - 3:30 | Period 8 (*Jazz Band Only) Office Hours | 2:50 - 3:30 | Period 8 (*Jazz Band Only) Office Hours | |
| 2:45- 3:00 | Break | | *Group B Virtual Asynchronous | | **Group A Virtual Asynchronous | |
| 3:00- 3:40 | Period 8* | | | | | |

Sample Student Schedule : Cohort A

Monday: Advisory @ 10:10, then Asynch.

Tuesday: Onsite periods 2,4,6

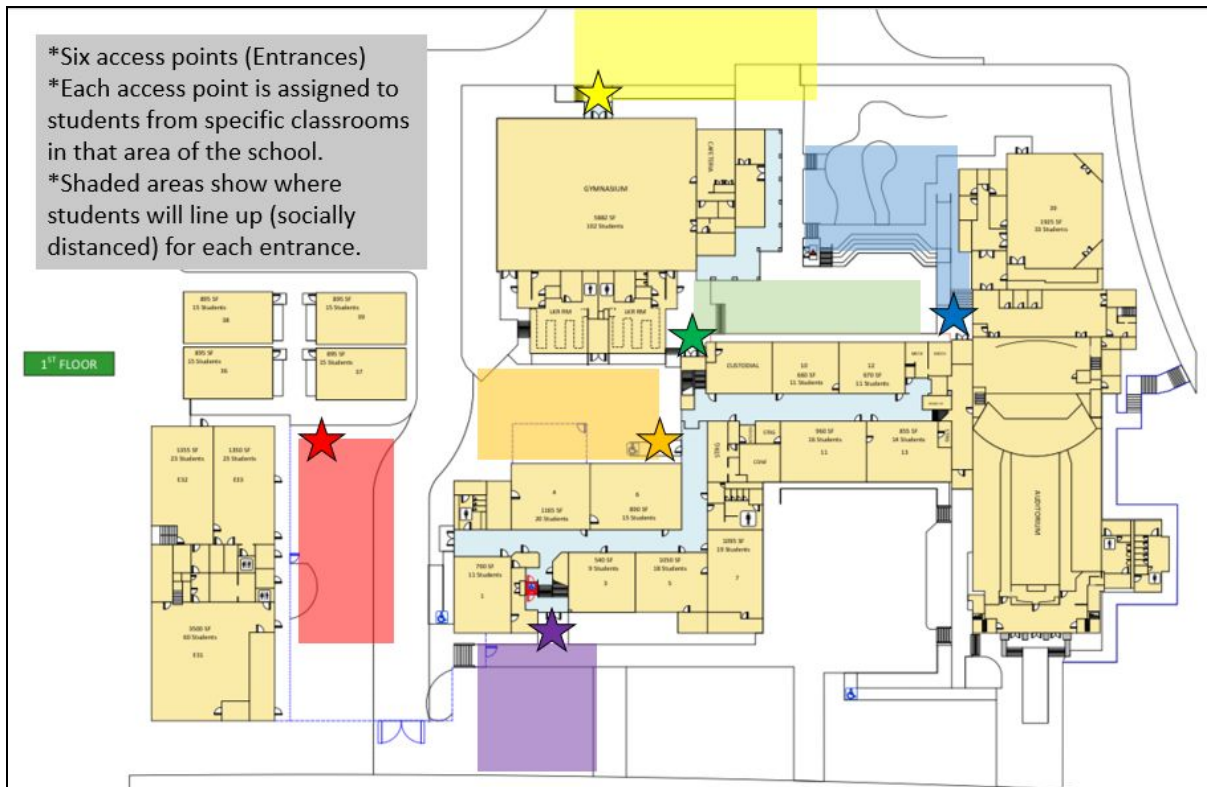
Wednesday: Onsite periods 3,5,7

Thursday: Asynchronous work periods 2,4,6

Friday: Asynchronous work periods 3,5,7

Student Drop Off & Pick Up

- Students may arrive on campus up to 15 minutes prior to the start of their day.
- Students will be assigned a campus entrance in close proximity to the location of their first class of the day.
- Students must head directly to their assigned point of entry, and wait in the designated area to be let in the building.



- Student temperatures will be taken, but not recorded, at their assigned point of entry. Parents will be contacted for students with a fever of greater than 100.4 degrees.
- Students will be monitored as they move into and out of the building in order to ensure that safety protocols (social distancing, mask wearing, etc.) are being followed.
- Parents will not be allowed to accompany students on to campus before, during, or after school.

Transportation - Detailed information will be available once physical distancing requirements on buses are made clear.

Personal Protective Equipment

- Students - all students would be required to wear a mask according to county guidelines at this time. This will be adjusted if and when guidance changes. Students who do not have a mask will be provided one by the school.
- Staff - All staff will be required to wear a mask and have the option of wearing a plastic face shield as well.

Physical Distancing

- In Class - Students will be seated six feet apart while in classrooms.
- In Hallways - Staff will supervise hallways at all passing periods to remind students to maintain six feet of physical distance.
- Outside - during PE and any time they line up outside, students will maintain six feet of social distance.

Lunch

- Students will wash their hands or use hand sanitizer before and after Lunch.
- School lunches will be provided to ALL students at no cost.
 - AM/PM Model - AM students will be provided a “grab-n-go” lunch as they leave campus. PM students will be provided a “grab-n-go” lunch to eat immediately upon arriving at school.
 - A/B Model - All students will be provided a “grab-n-go” lunch to eat during the lunch break.
- There will be no a la carte items available for purchase.
- Students will be placed in assigned groups for lunch. Each group will be given a specific area on the field or in the eating areas where they will eat lunch. Groups will be rotated through the different eating areas.
- All county and state guidelines regarding the sharing and disinfecting of equipment will be followed.

Restrooms

- Students will use common restrooms with particular stalls assigned to each grade level.
- Two students will be allowed in at a time during lunch, with adults monitoring
- Students may access restrooms during class periods.